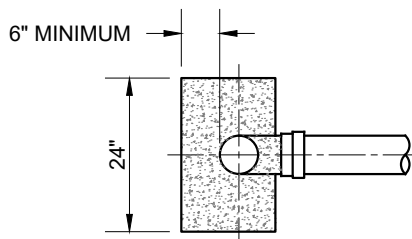


ELEVATION



SECTION A-A

NOTES:

1. COAT ALL FITTINGS, VALVES, AND BOLTED COUPLINGS WITH NO-OX-ID A SPECIAL COMPOUND AND WRAP WITH NO-OX-ID TAPE. ENCASE IN TWO LAYERS OF 8-MIL POLYETHYLENE WRAP.
2. ENCASE DUCTILE IRON PIPE, FIRE HYDRANT BURY AND 6" FIRE HYDRANT EXTENSION WITH TWO LAYERS OF 8-MIL POLYETHYLENE WRAP.
3. FIRE HYDRANTS SHALL BE PER LBWD STANDARD SPECIFICATION.
4. ALL FIRE HYDRANTS SHALL HAVE A 2-1/2" DOME OUTLET.

FIRE HYDRANT ASSEMBLY

WDS - 102



Long Beach Water
Exceptional Water • Exceptional Service

RECOMMENDED

Robert Johnson

DIRECTOR OF ENGINEERING

APPROVED

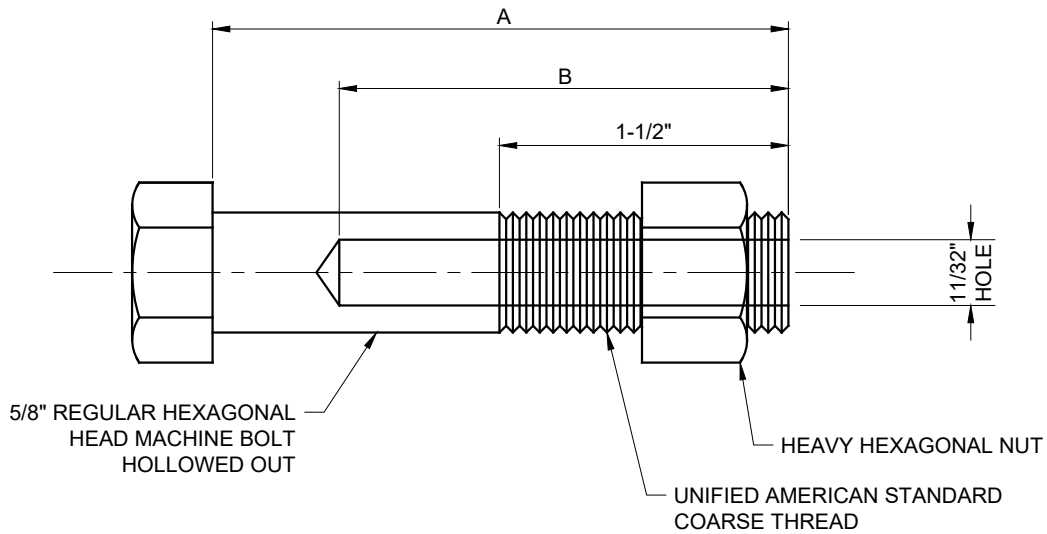
Debra Paul

DEPUTY GENERAL MANAGER / CHIEF ENGINEER

DATE: 02-2020

SCALE: N.T.S.

SHEET 1 OF 2



	DIMENSIONS (INCHES)	
	A	B
DUCTILE IRON FIRE HYDRANT BODY	3	2-3/8
BRONZE FIRE HYDRANT BODY	2-1/2	2

NOTES:

1. MATERIAL: BLACK LOW CARBON STEEL ASTM A-307 HOT - DIPPED GALVANIZED COATING.
2. BOLTS TO BE INSTALLED ON FLANGE WITH HEXAGONAL NUT ON TOP.
3. FILL HOLLOW WITH SILICONE AND COAT BOLT WITH NO-OX-ID GREASE.

FIRE HYDRANT ASSEMBLY

WDS - 102



Long Beach Water
 Exceptional Water • Exceptional Service

RECOMMENDED

Robert Johnson

DIRECTOR OF ENGINEERING

APPROVED

Debra Paul

DEPUTY GENERAL MANAGER / CHIEF ENGINEER

DATE: 02-2020

SCALE: N.T.S.

SHEET 2 OF 2