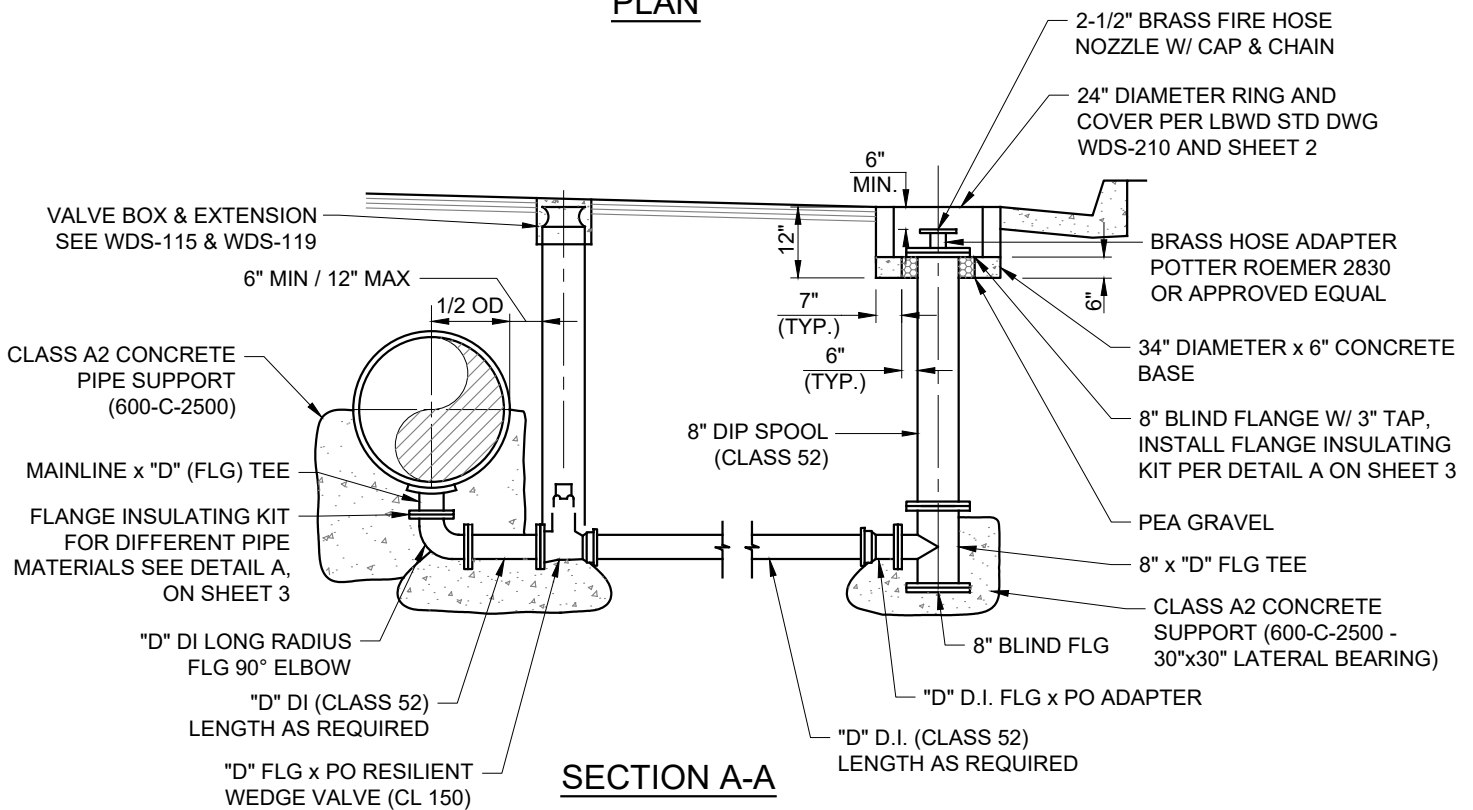


**PLAN**



**MANUAL DRAIN BLOWOFF DETAIL**

**BLOW-OFF ASSEMBLY**

**WDS - 113.1**



**Long Beach Water**  
Exceptional Water • Exceptional Service

RECOMMENDED

*Robert Johnson*

DIRECTOR OF ENGINEERING

APPROVED

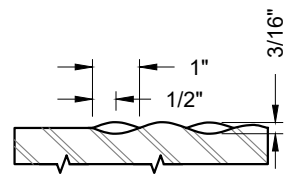
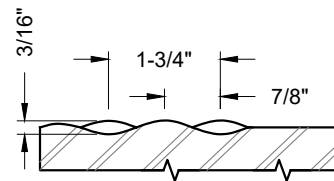
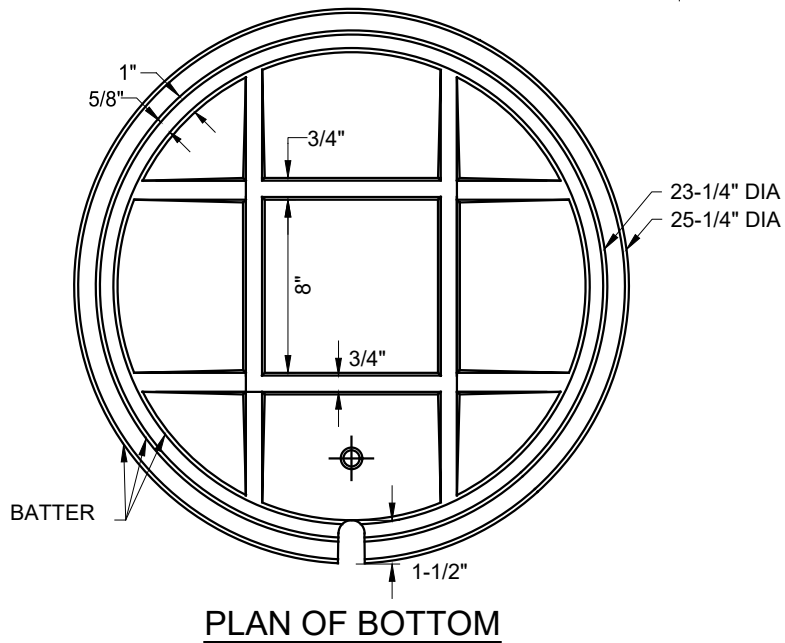
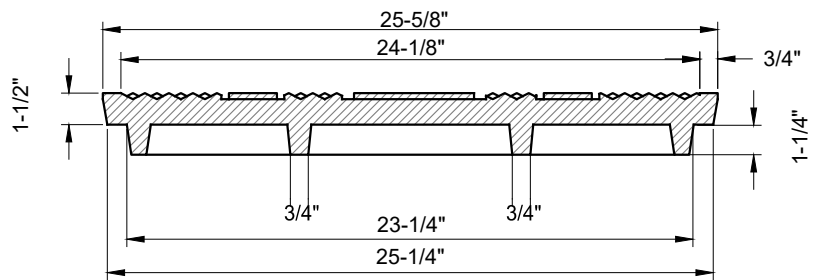
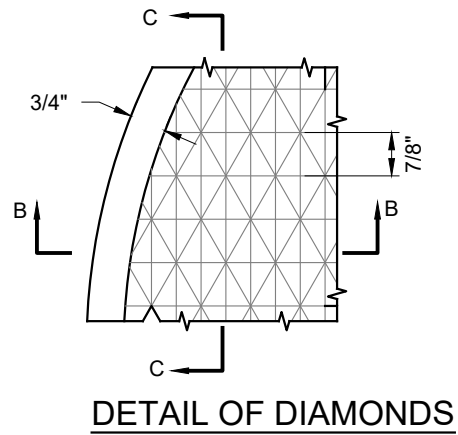
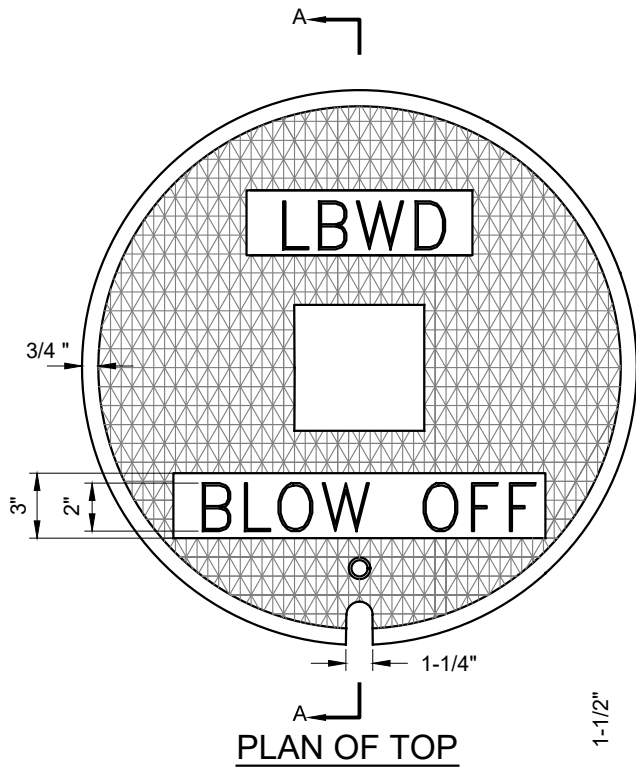
*Debra Paul*

DEPUTY GENERAL MANAGER / CHIEF ENGINEER

DATE: 02-2020

SCALE: N.T.S.

SHEET 1 OF 3



**NOTE:**

THIS COVER SHALL BE USED WITH STANDARD HEAVY CAST IRON MAINTENANCE HOLE FRAME. SEE WDS-210.

**BLOW-OFF ASSEMBLY**

**WDS - 113.1**



**Long Beach Water**  
Exceptional Water • Exceptional Service

RECOMMENDED

*Robert Johnson*  
DIRECTOR OF ENGINEERING

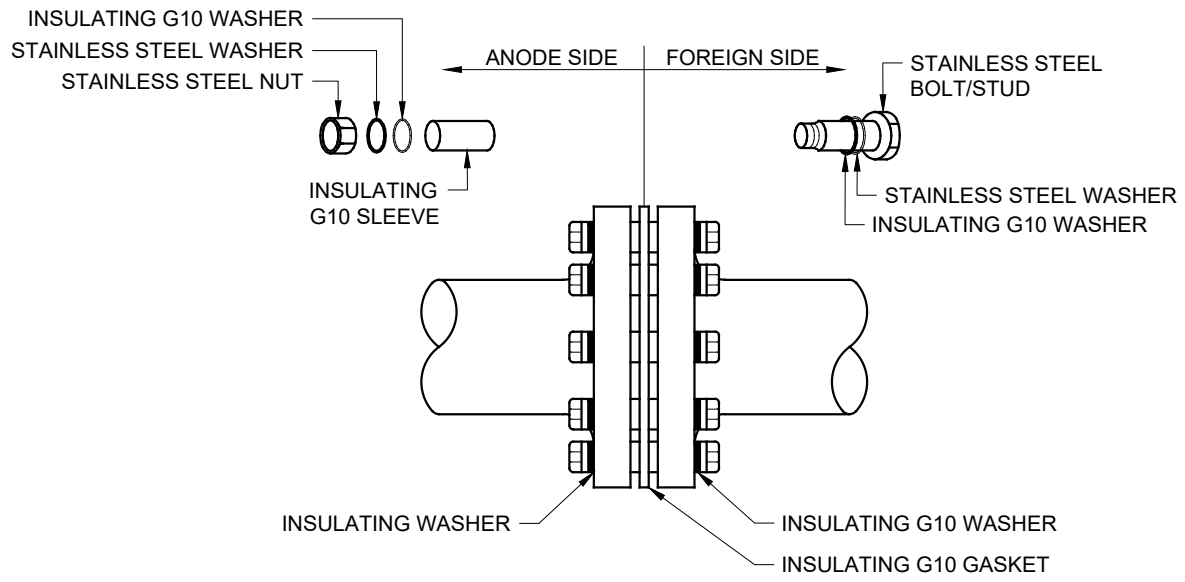
APPROVED

*Shirley Paul*  
DEPUTY GENERAL MANAGER / CHIEF ENGINEER

DATE: 02-2020

SCALE: N.T.S.

SHEET 2 OF 3



FLANGE INSULATING KIT - DETAIL A

NOTES:

1. HARDWARE QUANTITIES IN FLANGE INSULATING KIT WILL VARY BASED ON GASKET PATTERN AND PIPE SIZE.

BLOW-OFF ASSEMBLY

WDS - 113.1



**Long Beach Water**  
 Exceptional Water • Exceptional Service

RECOMMENDED

*Robert Johnson*

DIRECTOR OF ENGINEERING

APPROVED

*Debra Paul*

DEPUTY GENERAL MANAGER / CHIEF ENGINEER

DATE: 02-2020

SCALE: N.T.S.

SHEET 3 OF 3