

NOTES:

WHEN BOLTED COUPLING IS USED AT JOINT, REMOVE MORTAR COATING AS REQUIRED. AFTER INSTALLATION OF BOLTED COUPLING, COAT ALL FITTINGS, VALVES, AND BOLTED COUPLINGS WITH NO-OX-ID A SPECIAL AND WRAP NO-OX-ID TAPE.

DISHED HEAD - RECESSED

WDS - 205



Long Beach Water
 Exceptional Water • Exceptional Service

RECOMMENDED

Robert Johnson

DIRECTOR OF ENGINEERING

APPROVED

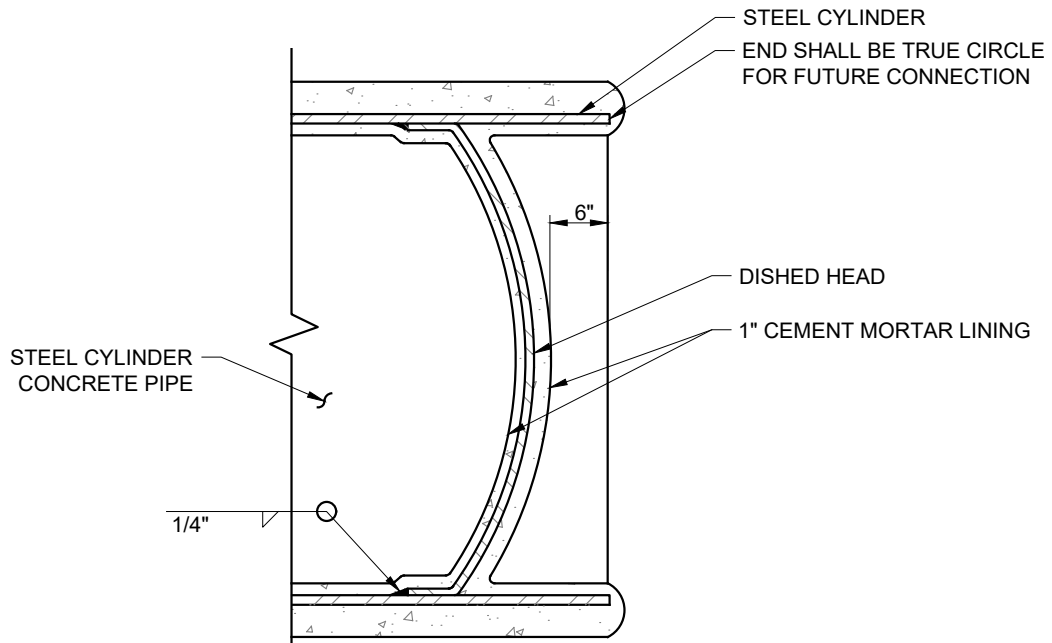
Debra Paul

DEPUTY GENERAL MANAGER / CHIEF ENGINEER

DATE: 02-2020

SCALE: N.T.S.

SHEET 1 OF 2



DETAIL SHOWING RECESSED DISH HEAD

NOTES:

1. STEEL PLATE DISHED HEAD AND STEEL CYLINDER IN STEEL CYLINDER CONCRETE PIPE TO BE DESIGNED AND INSTALLED TO WITHSTAND SPECIFIED TEST PRESSURE.
2. STEEL PLATE SHALL CONFORM TO SPECIFICATIONS FOR LOW AND INTERMEDIATE TENSILE STRENGTH CARBON PLATES OF STRUCTURAL QUALITY ASTM DESIGNATION A-283 OF LATEST REVISION WITH THE MAXIMUM ALLOWABLE UNIT STRESS IN THE STEEL EQUAL TO 12,000 PSI.

DISHED HEAD - RECESSED

WDS - 205



Long Beach Water
 Exceptional Water • Exceptional Service

RECOMMENDED

Robert Johnson

DIRECTOR OF ENGINEERING

APPROVED

Debra Paul

DEPUTY GENERAL MANAGER / CHIEF ENGINEER

DATE: 02-2020

SCALE: N.T.S.

SHEET 2 OF 2