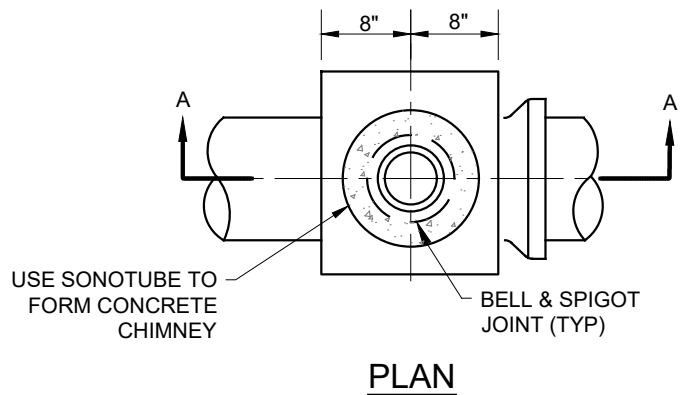


D1 = 6" OR GREATER

D2 = D1 PLUS 2" OR GREATER

**SECTION B-B**

**ELEVATION A-A**



**PLAN**

**NOTES:**

1. THE UPPER END OF THE CHIMNEY WYE SHALL BE 9' BELOW ELEVATION OF THE GUTTER UNLESS OTHERWISE SPECIFIED ON PROJECT PLANS.
2. UNDER NO CIRCUMSTANCES SHALL TWO (2) OR MORE CONNECTING SEWERS BE CONSTRUCTED AT THE SAME CHIMNEY.
3. WHEN THE ANGLE OF THE CHIMNEY IS BETWEEN 67 1/2° AND 90° WITH THE HORIZONTAL, THE WYE SHALL FACE THE PROPERTY TO BE SERVED. THE HOUSE CONNECTING SEWER SHALL EXTEND INTO THE WYE'S SPUR.
4. WHEN THE ANGLE OF THE CHIMNEY IS LESS THAN 67 1/2° WITH THE HORIZONTAL, THE WYE SHALL FACE AWAY FROM THE PROPERTY TO BE SERVED. THE HOUSE CONNECTING SEWER SHALL EXTEND INTO THE WYE'S BARREL.

**SEWER CHIMNEY**

**WDS - 507**



**Long Beach Water**  
Exceptional Water • Exceptional Service

RECOMMENDED

*Robert Johnson*

DIRECTOR OF ENGINEERING

APPROVED

*Debra Paul*

DEPUTY GENERAL MANAGER / CHIEF ENGINEER

DATE: 02-2020

SCALE: N.T.S.

SHEET 1 OF 1