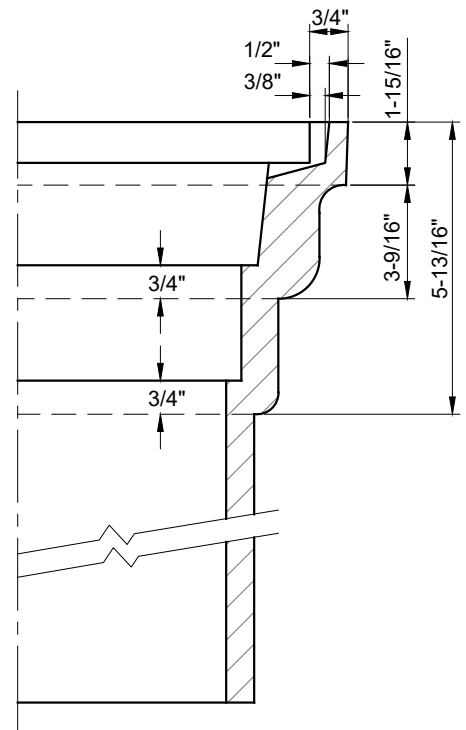


**SECTION A-A**



**SECTION B-B**

**NOTES:**

1. LONG BEACH STANDARD HEAVY 12" CAST IRON GATE BOX LID TO BE USED WITH THE GATE BOX (SEE WDS-118)
2. VALVE BOX CONSTRUCTION REQUIRES THE ORIENTATION OF THE VALVE LID EARS TO RUN IN-LINE WITH THE DIRECTION OF THE WATER MAIN OR LATERAL.

**ADJUSTABLE GATE BOX - 12-INCH**

**WDS - 117**



APPROVED

*Robert J. [Signature]*

DIRECTOR OF ENGINEERING / CHIEF ENGINEER

DATE: 02-2020

SCALE: N.T.S.

SHEET 1 OF 1