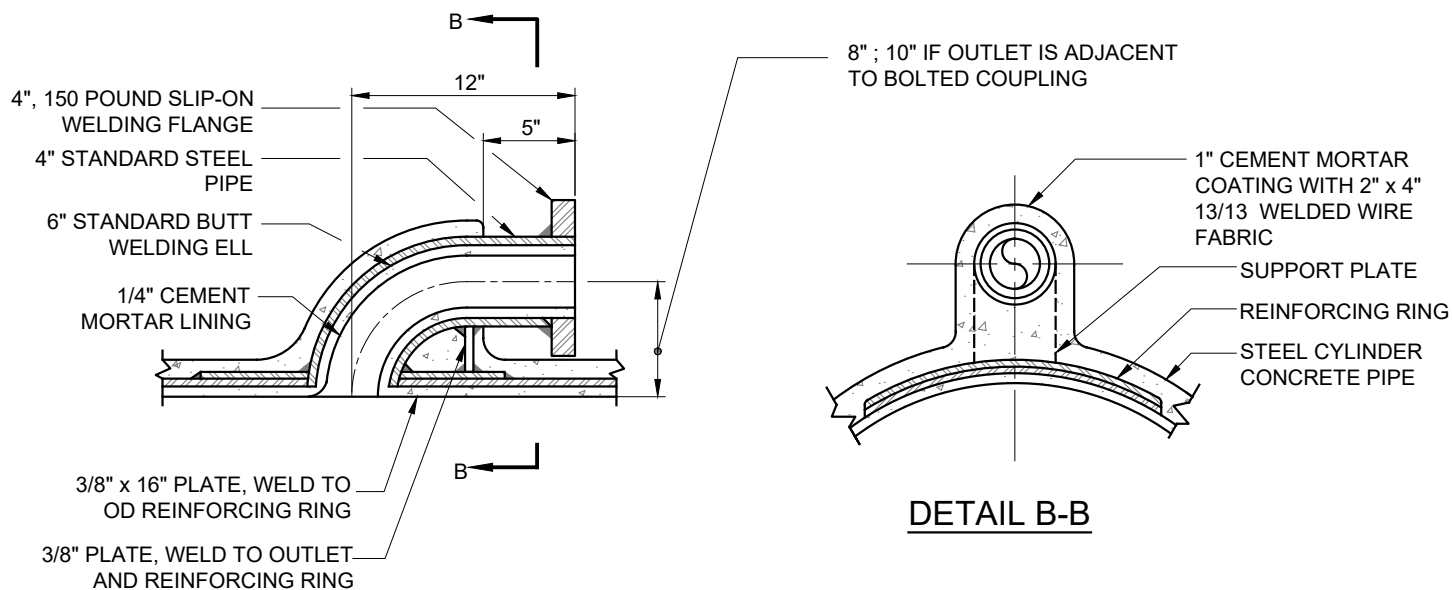


4", 6", 8", 12" SIDE OUTLET



4" TOP OUTLET

NOTES:

1. REFER TO SPECIFICATION SECTION 09 90 00 FOR COATING OF STEEL PIPE.

FLANGED OUTLETS FOR STEEL CYLINDER CONCRETE PIPE

WDS - 203



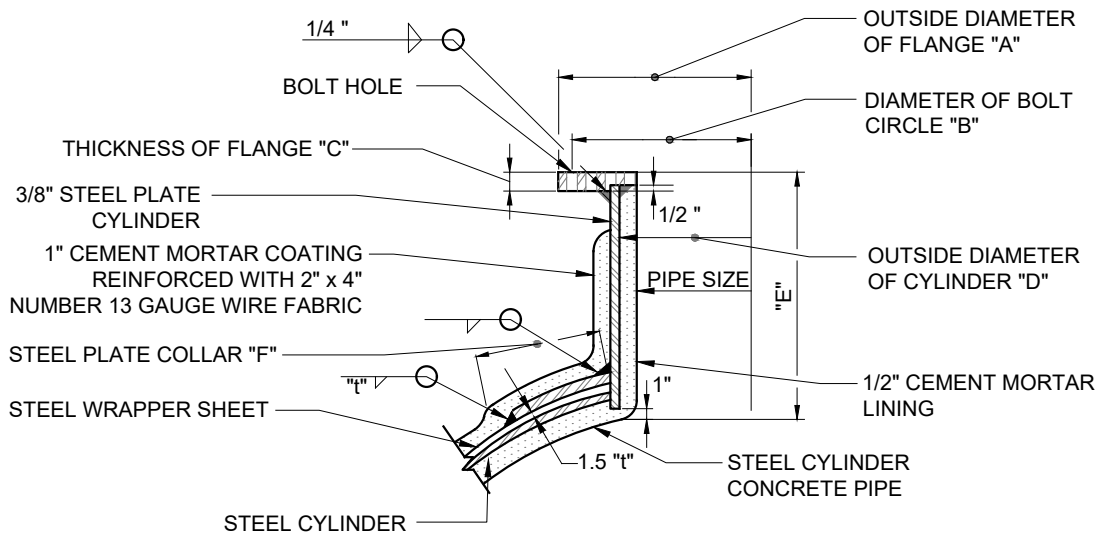
APPROVED

Robert J. [Signature]
DIRECTOR OF ENGINEERING / CHIEF ENGINEER

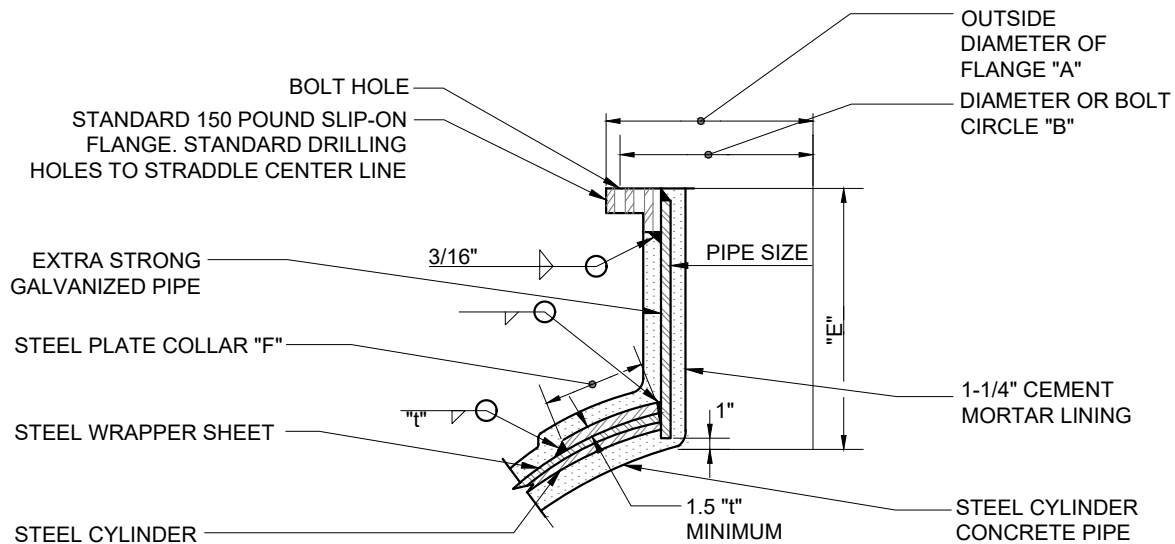
DATE: 02-2020

SCALE: N.T.S.

SHEET 1 OF 2



SECTIONAL DETAIL FOR 12", 20", 24", 30" PIPE OUTLET



SECTIONAL DETAIL FOR 3", 4", 6", 8" PIPE OUTLET

NOTES:

1. "t" REFERS TO THICKNESS OF THE STEEL WRAPPER SHEET.
2. REFER TO SPECIFICATION SECTION 09 90 00 FOR COATING OF STEEL PIPE.

| DIMENSIONS IN INCHES | | | | | | |
|----------------------|--------|--------|---------|--------|----|--------|
| PIPE SIZE | A | B | C | D | E | F |
| 3 | 7-1/2 | 6 | | | 9 | 2 |
| 4 | 9 | 7-1/2 | | | 9 | 2 |
| 6 | 11 | 9-1/2 | | | 9 | 3 |
| 8 | 13-1/2 | 11-3/4 | | | 9 | 4 |
| 12 | 19 | 17 | 1-1/4 | 13-3/4 | 12 | 6-1/2 |
| 20 | 27-1/2 | 25 | 1-11/16 | 21-3/4 | 20 | 10-1/2 |
| 24 | 32 | 29-1/2 | 1-7/8 | 25-3/4 | 20 | 12-1/2 |
| 30 | 38-3/4 | 36 | 2-1/8 | 31-3/4 | 20 | 15-1/2 |

FLANGED OUTLETS FOR STEEL CYLINDER CONCRETE PIPE

WDS - 203



APPROVED

Robert J. [Signature]

DIRECTOR OF ENGINEERING / CHIEF ENGINEER

DATE: 02-2020

SCALE: N.T.S.

SHEET 2 OF 2